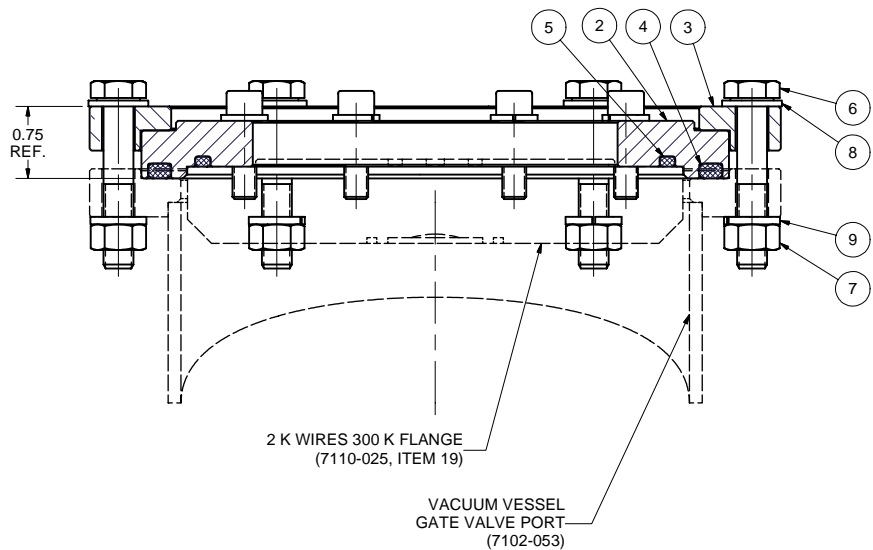
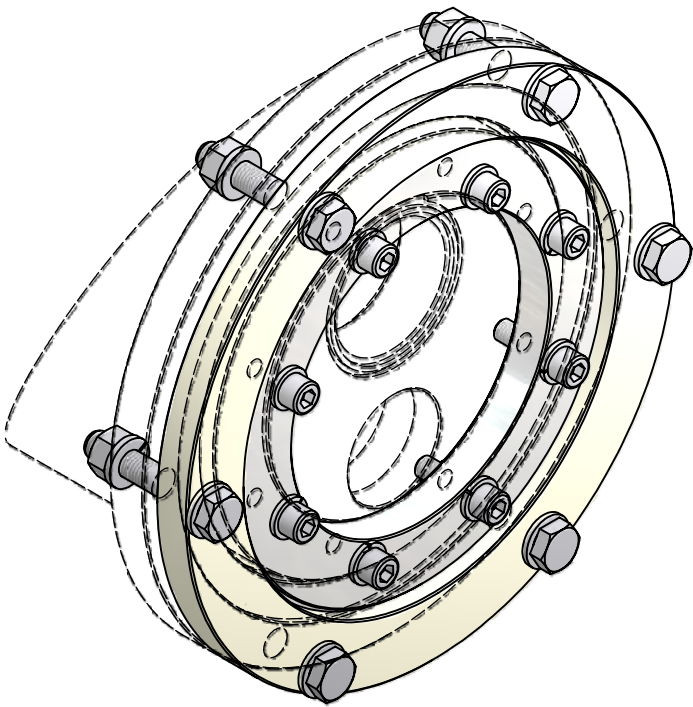
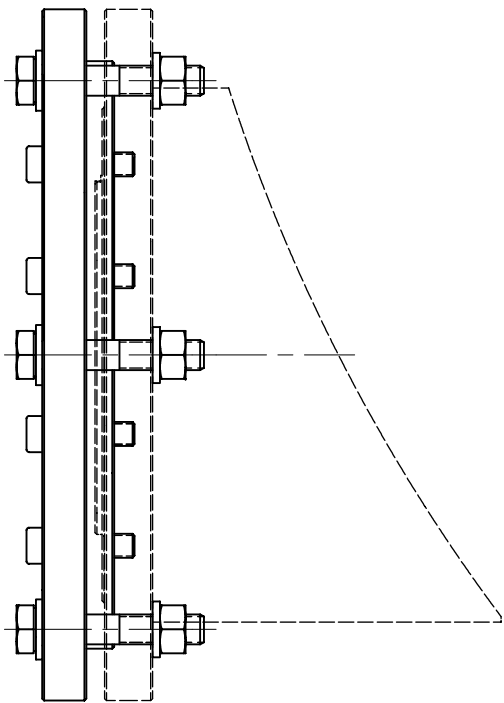
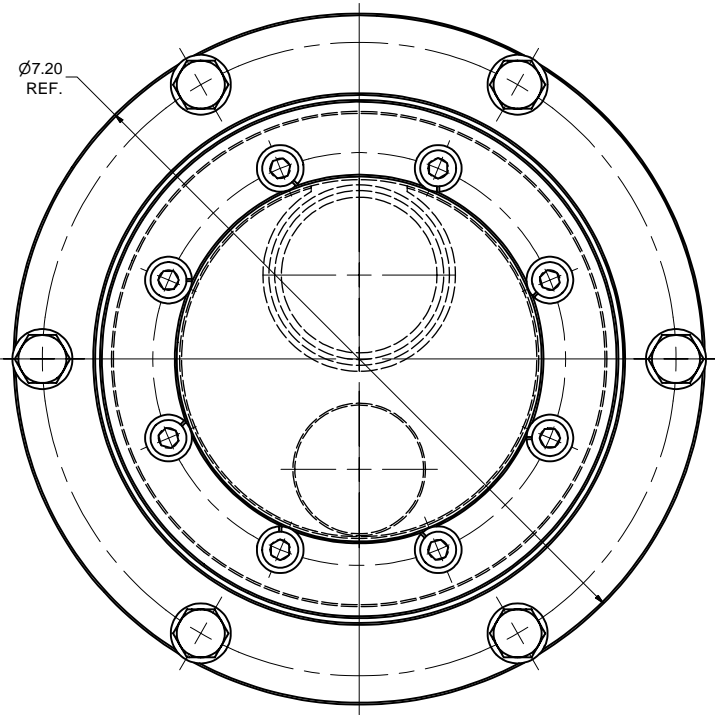





REVISIONS			
SYM.	ZONE	DESCRIPTION	DATE APP.

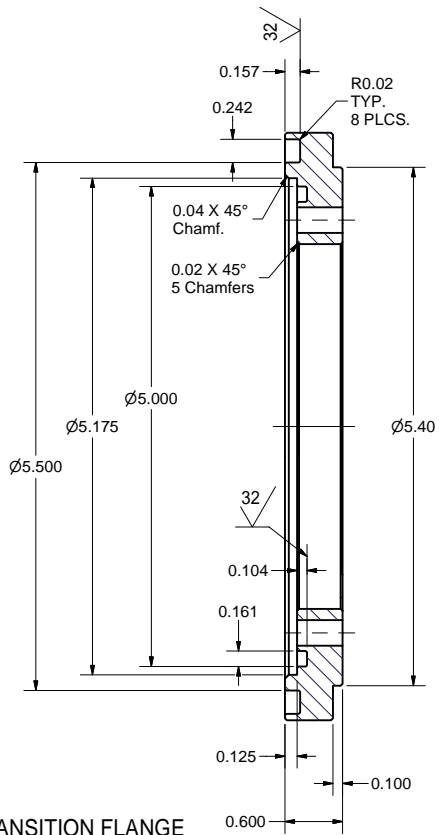
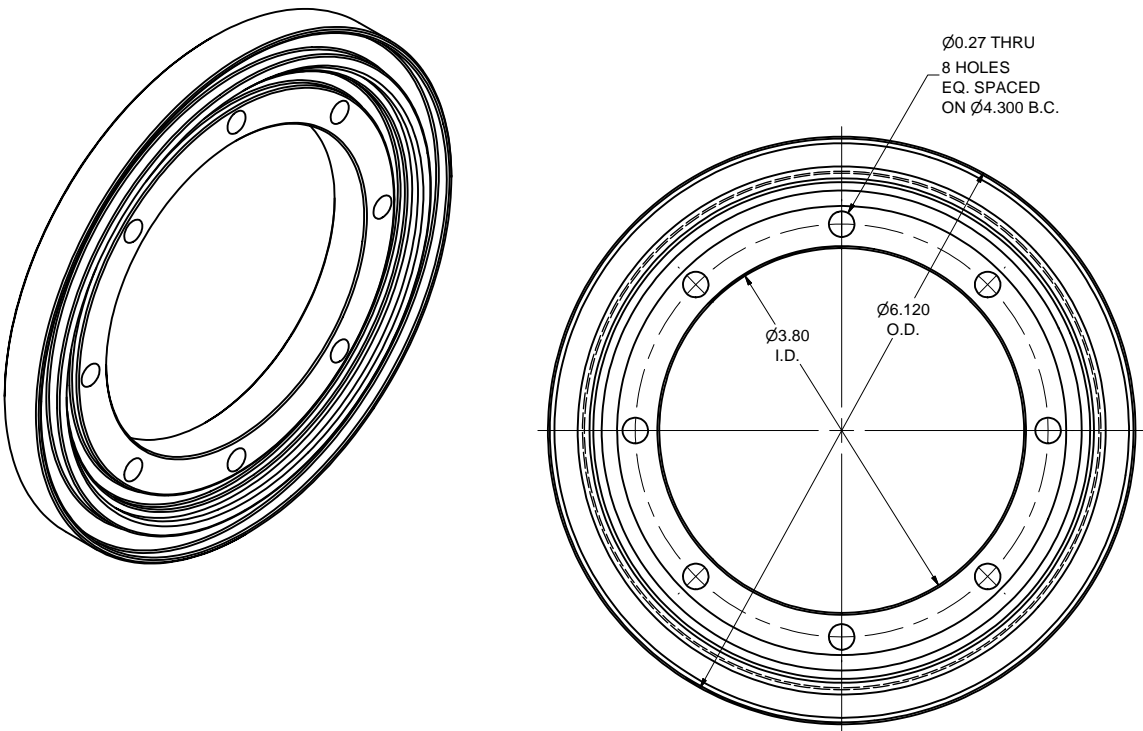


1 2 K WIRES PORT FLANGES ASM.  
FILE NAME: 7102-126  
SHEET NO.: 1  
DFT. SCALE: 1:1  
MATERIAL:  
QTY: 1 PER CRYOMODULE  
NOTES:

11	-	1/4 Spring Lock Washer	8			St. Steel	
10	-	1/4-28 x 7/8 Sock. Head Cap Screw	8			St. Steel	
9	-	5/16 Spring Lock Washer	6			St. Steel	
8	-	5/16 Washer, 5/8 OD	6			St. Steel	
7	-	5/16-24 Hex Nut	6			St. Steel	
6	-	5/16-24 x 1-3/4 Hex Cap Screw	6			St. Steel	
5	-	4.375 ID x 1/8 W (#248) O-Ring	1			Viton or EPDM	
4	-	5.5 ID x 3/16 W (#357) O-RING	1			Viton or EPDM	
3	7102-126 (Sh. 2)	2 K WIRES PORT ROT. FLANGE	1				
2	7102-126 (Sh. 2)	2 K WIRES PORT TRANSITION FLANGE	1				
1	7102-126 (Sh. 1)	2 K WIRES PORT FLANGES ASM.	X				

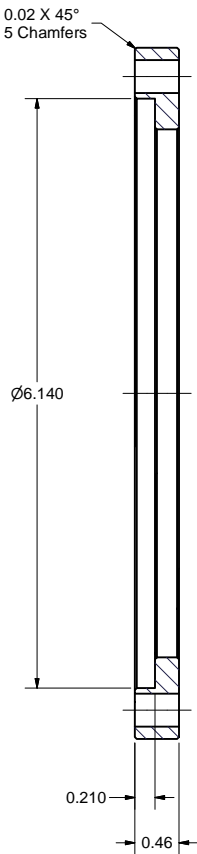
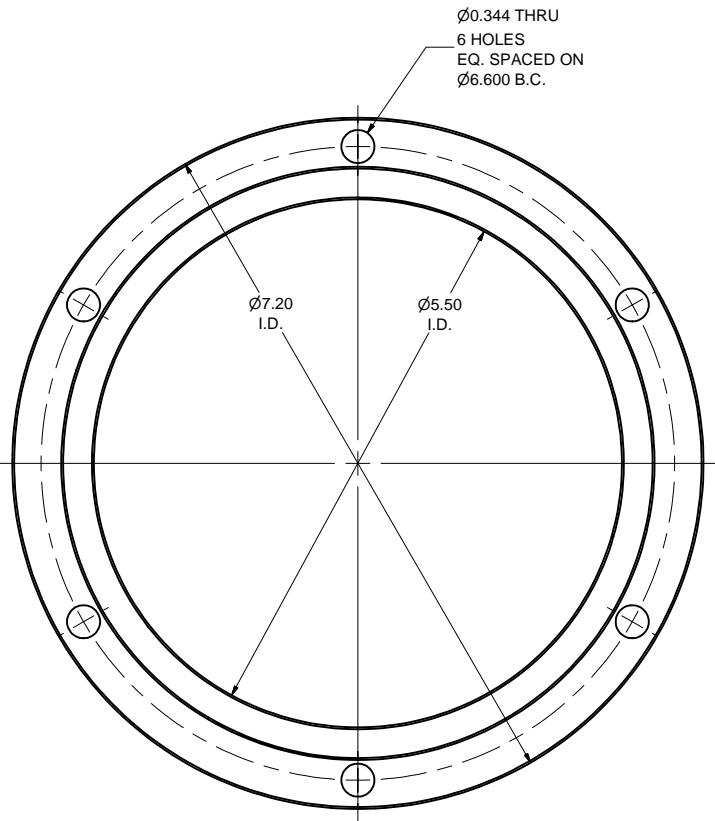
		ITEM	DWG. NO.	DESCRIPTION			G1	G2	G3	REMARKS		REV.
								QUANTITY				
D	PRINT DISTR.	PLOT DATE: 6/19/2007 CAD FILE NAME: 7102-126.idw										
7102-126 SH. NO. 1 OF 2	CR-1	UNLESS OTHERWISE SPECIFIED:		<div><div> <b>LEPP</b></div><div>CORNELL UNIVERSITY Floyd R. Newman Laboratory Ithaca, NY 14853</div></div> <div>ERL INJECTOR CRYOMODULE 2 K WIRES PORT FLANGES</div>								
		DIMENSIONS ARE IN INCHES; TOLERANCES ON: .0 ± .02 .00 ± .010 .000 ± .005 FRACTIONS ± 1/32 ANGLES ± 0.5° ALL SURFACES 										
		CHECKED BY: VM		DRAWN BY V.Medjdzade	DRAWN FOR M.Liepe	DATE 6/16/2007	SCALE	D	7102-126 SH. NO. 1 OF 2	REV.		
REV.		APPROVED BY: ML										

REVISIONS			
SYM.	ZONE	DESCRIPTION	DATE APP.



### 2 K WIRES PORT TRANSITION FLANGE

FILE NAME: 7102-126  
SHEET NO.: 2  
DFT. SCALE: 1:1  
MATERIAL: 304L ST. STEEL  
QTY: 1 PER ASSEMBLY  
NOTES:



### 2 K WIRES PORT ROT. FLANGE

FILE NAME: 7102-126  
SHEET NO.: 2  
DFT. SCALE: 1:1  
MATERIAL: 304L ST. STEEL  
QTY: 1 PER ASSEMBLY  
NOTES:

		ITEM		DWG. NO.		DESCRIPTION			G1		G2		G3		REMARKS		REV.				
									QUANTITY												
D		PRINT DISTR.		PLOT DATE: 6/19/2007 CAD FILE NAME: 7102-126.idw																	
SH. NO. 2 OF 2		7102-126		CR-1		UNLESS OTHERWISE SPECIFIED:  DIMENSIONS ARE IN INCHES: TOLERANCES ON: .0 ± .02 .00 ± .010 .000 ± .005 FRACTIONS ± 1/32 ANGLES ± 0.5° ALL SURFACES ✓			<div>CORNELL UNIVERSITY FLOYD R. NEWMAN LABORATORY ITHACA, NY 14853</div> <div>ERL INJECTOR CRYOMODULE 2 K WIRES PORT FLANGES</div>												
REV.		CHECKED BY: VM		DRAWN BY V.Medjdzade			DRAWN FOR M.Liepe			DATE 6/16/2007			SCALE		D		7102-126 SH. NO. 2 OF 2			REV.	
		APPROVED BY: ML																			